



# LikasVue

Effortless Living, Well-Crafted



Live In An Urban Oasis



### Strategically Located

Next to Kota Kinabalu's Central Business District



### Unobstructed Views

Of Mesmerising Forest Or Bayscape



### Seamless Connectivity

Easy Access To Major Highways



### Ample Urban Conveniences

Retail, Banking, Education, Tourism Attraction, Shopping and Medical Facilities

## Well Located Close To Everything You Need

Located in between the Kota Kinabalu's city centre and the grand view of Likas Bay - LikasVue is surrounded by a network of facilities including medical centres, local & international schools, malls and hypermarkets. The address is highly accessible, served by excellent road system that includes Jalan Tun Fuad Stephen & Jalan Tuaran, with pulses of the KK City only 15 minutes away.



Likas Square

Suria Sabah Shopping Mall

SICC

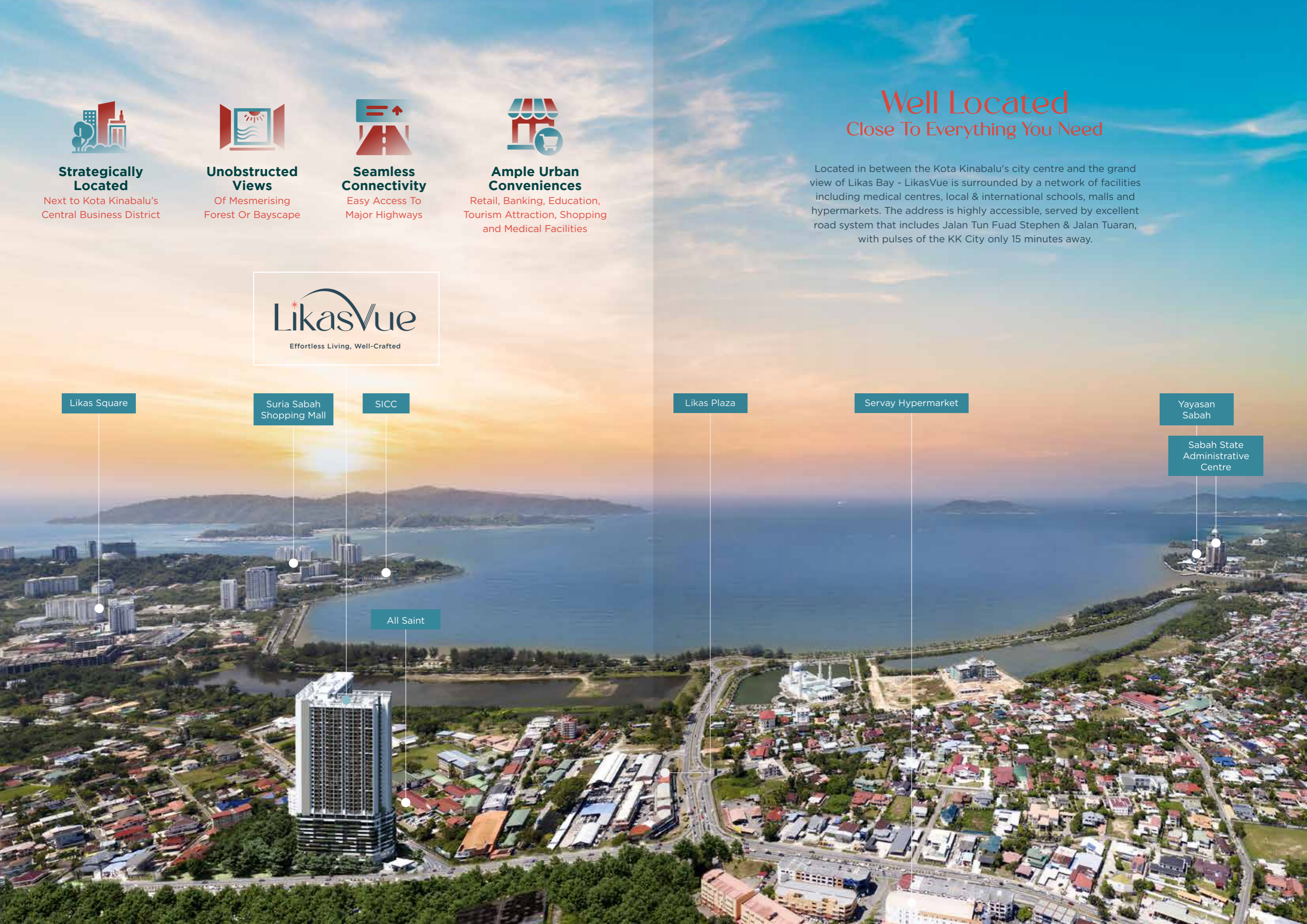
All Saint

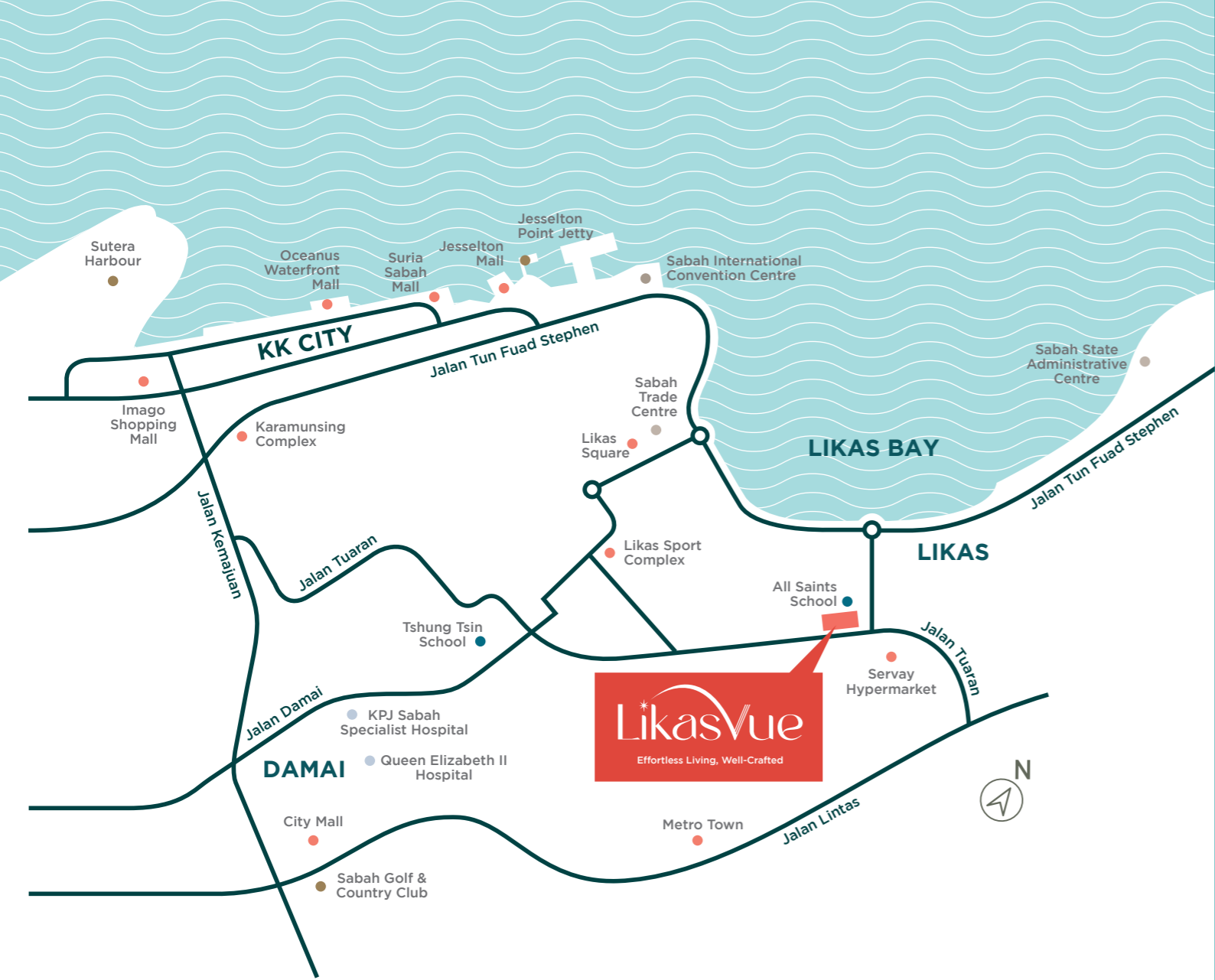
Likas Plaza

Servay Hypermarket

Yayasan Sabah

Sabah State Administrative Centre





## A Great Location For Life

Easily accessible via few major access, LikasVue keeps you connected to life's many pursuits. Whether its dining, shopping or learning institutions, you are surrounded by the finest establishments and amenities.

Excellent accessibility via major access

- Jalan Tun Fuad Stephen
- Jalan Tuaran
- Jalan Teluk Likas
- Jalan Lintas



## Ample Urban Conveniences within Reach

Whether it's dining, shopping, schools or parks, you're surrounded by the finest amenities in this well established township.

### Education Hub

- 600m** All Saints Secondary School
- 800m** St. Agnes Primary School
- 900m** Asia Metropolitan College
- 1.0km** SJK(C) St. James
- 1.2km** SRJK Lok Yuk
- 1.2km** SM Shan Tao
- 1.4km** Chung Hwa Kindergarden & Nursery Likas
- 1.4km** SJK(C) Lok Yuk
- 1.5km** SMK Perempuan Likas
- 1.5km** SMK Likas
- 1.7km** Kolej Vokasional Likas
- 2.4km** AMC College
- 2.4km** Tshung Tsin Secondary School
- 2.6km** Kian Kok Middle School
- 5.6km** SRJK Chung Hwa



### Tourism & Recreation

- 1.0km** Signal Hill Observatory Tower
- 2.0km** Likas Sport Complex
- 2.5km** Kota Kinabalu Wetland Ramsar Site
- 4.9km** Jesselton Point
- 5.0km** Sabah Tourism Board
- 5.6km** Tun Mustapha Tower

### Shopping

- 1.0km** Servay Hypermarket
- 3.3km** Thaiseng Supermarket
- 5.0km** Jesselton Mall Duty Free
- 6.8km** Imago Shopping Mall



### Government Office

- 2.9km** Kompleks Perikanan Likas
- 5.2km** Wisma Innoprise
- 5.4km** Sabah State Administration Center
- 6.7km** Consulate General of The People's Republic of China

### Medical Facilities

- 2.9km** KPJ Sabah Specialist Hospital
- 2.9km** KPJ Damai Care & Wellness Centre
- 3.2km** Queen Elizabeth II Hospital
- 3.5km** Sabah Medical Centre
- 4.3km** Jesselton Medical Centre



# A step up in Living Well

Beautifully crafted serviced suites & lifestyle shoppe in a realm of golden sunshine and clear blue skies. Sublime sky suites where bliss is found in the rhythm of urban lifestyle with endless views of the city and the sea. Experience only the very best at LikasVue, your perfect holiday home.

- **Connectivity**  
Prime Location
- **Recreation**  
Resort Facilities
- **Dual-key**  
Dual-Income
- **Convenience**  
Retail & Services
- **Hospitality**  
Quality Living



## Perfect Balance Lively Community

The LIFESTYLE SHOPPE featuring inspiring commercial spaces that serve as a hub for urban convenience catering to today's modern lifestyles. Everything you need and more is within your home



Retail Podium - where conveniences right at your doorstep



Infinity edge tranquil pool



A panoramic view blessed by nature



# Active & Unwind for livable community

Pamper yourself in this sanctuary of sun-kissed podium and pools shaded by trees and greens. With a diverse selection of wellness inspired facilities, here you can truly pamper yourself as you rejuvenate amidst nature.

## FACILITIES PLAN (LEVEL 10)

- 1 Library / Lounge
- 2 Function Room
- 3 Activity Deck
- 4 Swimming Pool
- 5 Kids Pool
- 6 Outdoor Gym
- 7 Mini Futsal Court
- 8 Table Tennis Room
- 9 Yoga Deck
- 10 Dance Room
- 11 Indoor Playground
- 12 Children Playground
- 13 Landscape Garden
- 14 Pergola
- 15 BBQ Area
- 16 Jogging Track
- 17 Games Zone
- 18 Meeting Room
- 19 Viewing Deck
- 20 Herb Garden

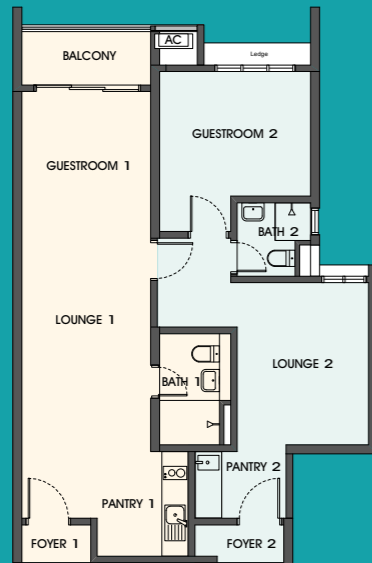


Private & privileged lifestyle facilities

**TYPE A1 / A2(d)**  
(Dual-Key)

884 sq.ft.

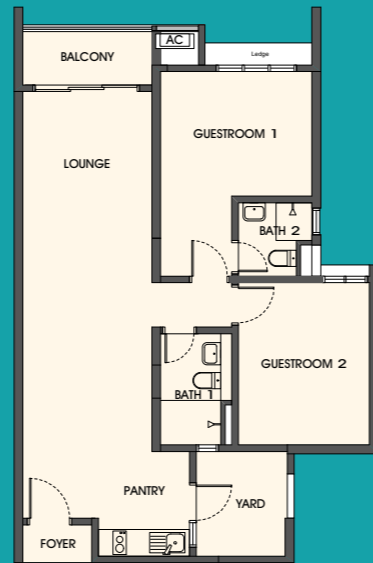
2 Bedrooms  
2 Bathrooms  
Level 11-25 Type A1  
Level 31-35 Type A2(d)



**TYPE A2**

884 sq.ft.

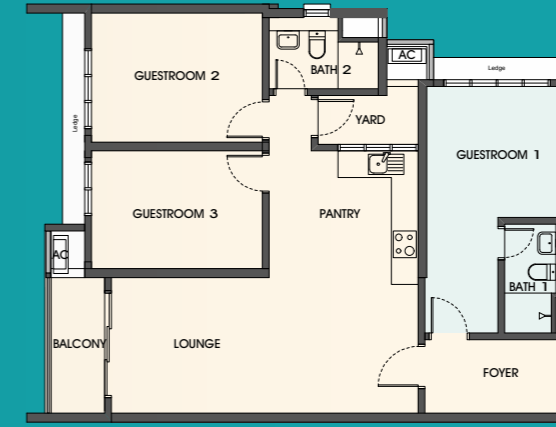
2 Bedrooms  
2 Bathrooms  
Level 26-30



**TYPE E**  
(Dual-Key)

1,056 sq.ft.

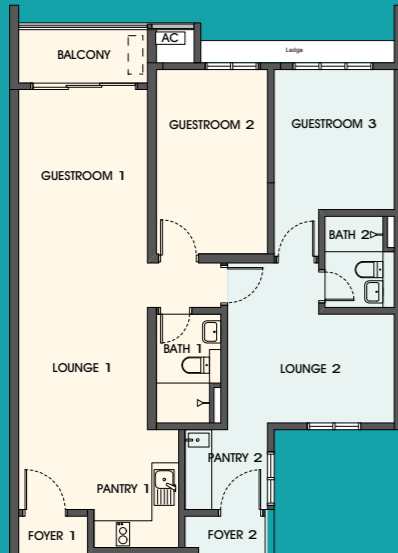
3 Bedrooms  
2 Bathrooms  
Level 11-35



**TYPE B1 / B2(d)**  
(Dual-Key)

973 sq.ft.

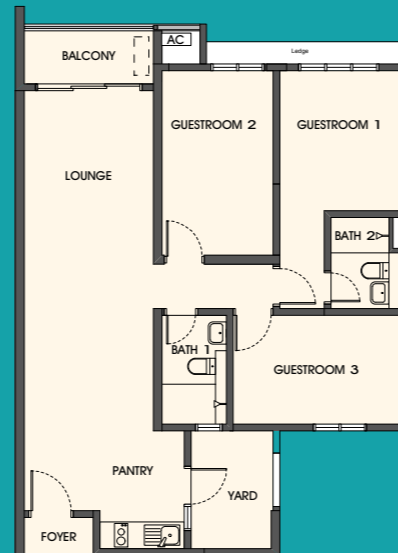
3 Bedrooms  
2 Bathrooms  
Level 11-25 Type B1  
Level 31-35 Type B2(d)



**TYPE B2**

973 sq.ft.

3 Bedrooms  
2 Bathrooms  
Level 26-30



**TYPE C**  
(Dual-Key)

1,051 sq.ft.

3 Bedrooms  
2 Bathrooms  
Level 11-35



**TYPE D**  
(Dual-Key)

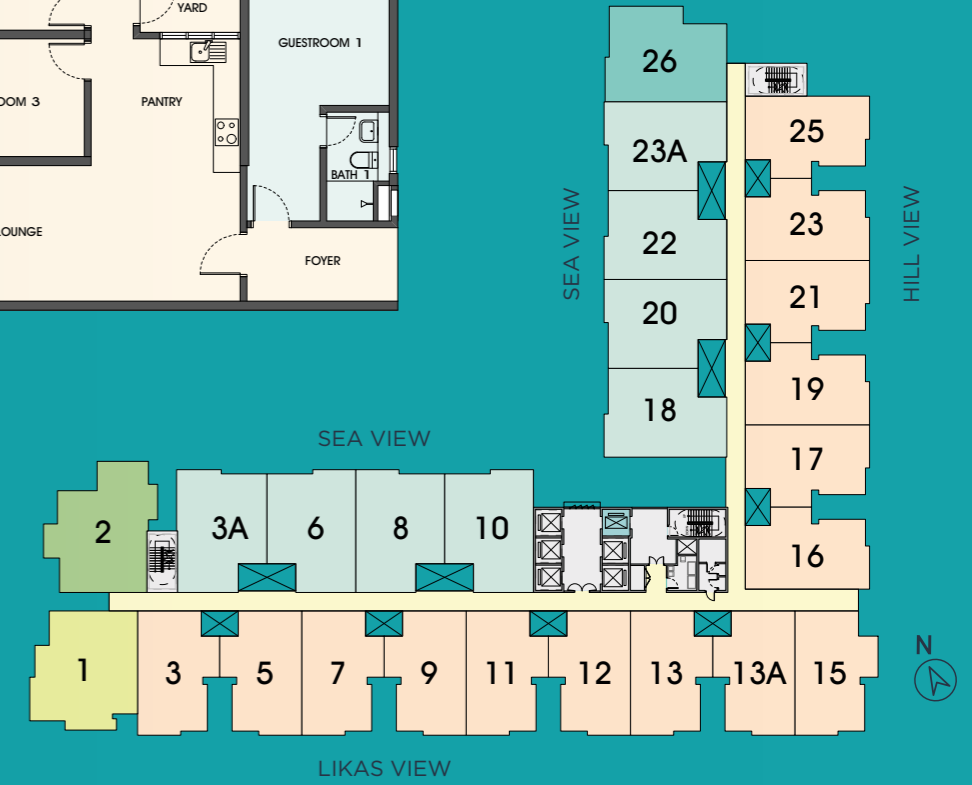
1,052 sq.ft.

3 Bedrooms  
2 Bathrooms  
Level 11-35



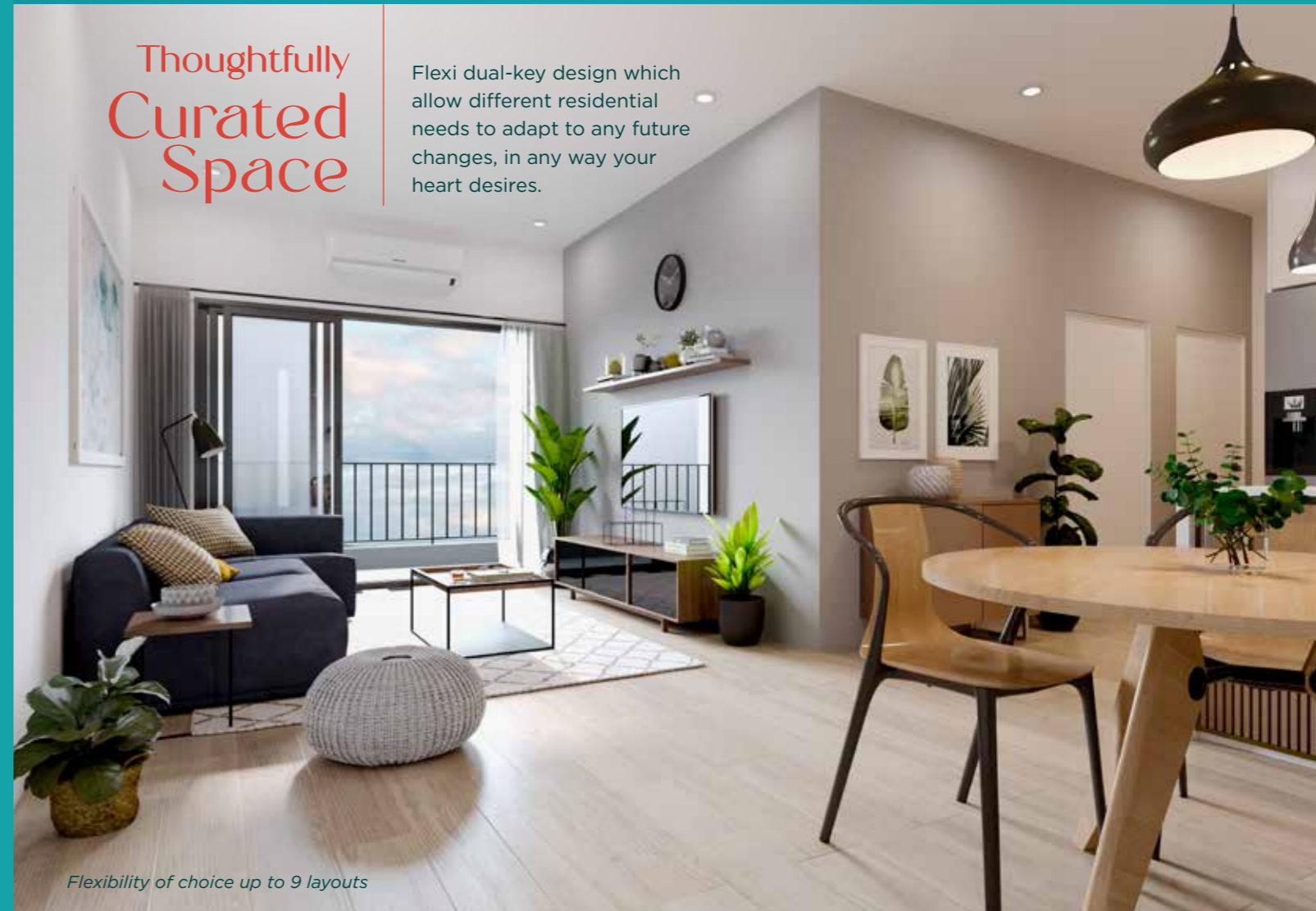
**KEY PLAN**

- Type A1 / A2 / A2(d)
- Type B1 / B2 / B2(d)
- Type C
- Type D
- Type E



Thoughtfully  
Curated  
Space

Flexi dual-key design which allow different residential needs to adapt to any future changes, in any way your heart desires.



Flexibility of choice up to 9 layouts



**ASIAN PAC HOLDINGS BERHAD** (029-T)  
AT THE HELM OF DYNAMIC DEVELOPMENTS

**Office**

Harmoni Bumiria Sdn Bhd (896251-P),  
G-38-G Signature Office, KK Times Square,  
Off Coastal Highway, 88100 Kota Kinabalu, Sabah.

**LikasVue Sales Gallery**

Lot 017528433,  
Jalan Teluk Likas, Likas,  
Kota Kinabalu, Sabah.

**088-203 993**  
**019-623 7668**

This project is also known as 'Vista Likas' as approved by the authorities. All information contained herein (including specifications, plan measurements, illustrations, pictures and photos) are subject to approval, amendments, variations and modifications without notification as may be required by the relevant authorities or developer or developer's consultants and is not intended to form and cannot form part of an offer and contract. Whilst every reasonable care has been taken in preparing this information, the developer cannot be held liable for any variation or inaccuracy.